

INSTALLATION PROCESS:

FK003D937-11 Complete Brake Line Kit

2010-11 Kawasaki ZG1400 Concours ABS



Step 1:

Identify the key components that complete our brake line kit:

You should have five (11) lines, six (7) single banjo bolts, eight (9) c-clips, and one (1) sheath clamp assembly. We have also included a total of sixteen (16) washers and six (17) “olive” conic inversors. We have included spares of both the crush washers and the conic inversors. We strongly suggest having a professional mechanic install your brake lines, all other installs may void your warranty.

Step 2:

To ensure there is no paint damage from the brake fluid, completely cover the bike. Installing brake lines can be a messy process, and brake fluid *WILL* spill!

Step 3:

After bleeding and drying out the OEM brake system, uninstall your stock hoses. Take note of how the stock system was routed in case you need to re-install the hoses. You may want to take pictures to use for reference.

Step 4:

Familiarize yourself with the new Galfer brake line kit. All the lines will be labeled for ease of installation. We will be starting out with the front brake lines labeled **LINE A, LINE B, AND LINE C**. First route line from the front master cylinder down the handle bars and toward the O.E.M. hard line. **SEE FIGURE 1**.

NOTES:

- Some of the stock hose retainers will not work with the smaller Galfer lines, when necessary, we have used zip-ties to keep the Galfer lines routed close to the ABS wire; in return, this helps to clean up the appearance of the brake lines and prevent binding.
- *All female ends require a brass conic inversor*, more commonly referred to as an “olive.”
- *All banjo fittings will need to be installed using a washer* in between all mating surfaces. For example, when installing the line at the caliper, use the following sequence; caliper, washer, banjo fitting, washer, banjo bolt.
- **Torque all stainless steel bolts from 15-17 ft pounds, all female fittings to 5 ft pounds.**

Step 5:

LINE A, LINE B, AND LINE C. First route line from the front master cylinder down the handle bars and toward the O.E.M. hard line. **(refer to drawing.)SEE FIGURE 1** Install **Line A** to the front master cylinder using a single banjo bolt and two (2) washers, the sequence will be as follows; master cylinder, washer, banjo fitting, washer, single banjo bolt. Route the line down to the OEM hard tubing, and install the female end to the tubing using an “olive” inversor **(refer to drawing.)** Use two (2) Galfer provided c-clips and the OEM bolts to replace the blocks on the stock hose **(refer to drawing.)**

Step 6:

Locate **Line B**; this line will travel from the ABS hard tubing to the right caliper (right, as if you are sitting on the bike) **(refer to drawing.)** Install **Line B** to the OEM hard tubing using an “olive” inversor. Use one (1) Galfer provided c-clip to replace the stock block at the OEM tubing **(refer to drawing.)** Route the line down to the right caliper and install the line using a single banjo bolt and two (2) washers, the sequence will be as follows; caliper, washer, banjo fitting, washer, banjo bolt. Use one (1) Galfer c-clip and OEM bolt to replace the stock block at the lower triple tree **(refer to drawing.)SEE FIGURE 2**

Step 7:

Locate **Line C**; this line will travel from the ABS hard tubing to the left caliper **(refer to drawing.)SEE FIGURE 3** Install **Line C** to the OEM hard tubing using an “olive” inversor. Use one (1) Galfer c-clip to replace the stock block at the OEM tubing **(refer to drawing.)SEE FIGURE 3** Route the line down to the left caliper and install the line using a single banjo bolt and two (2) washers, following the same sequence as before. Use one (1) Galfer c-clip and OEM bolt to replace the stock block at the lower fitting.

Step 8:

Locate the Galfer **clutch line**, identify which end to install at the master cylinder. Install this fitting to your clutch master cylinder using a single banjo bolt and two (2) washers. Use a Galfer provided c-clip and OEM bolt to replace the stock hose block at the upper triple tree **(refer to drawing.)SEE FIGURE 4** Route the line down to the slave cylinder, similarly to the stock routing. Install the line at the slave cylinder using a single banjo bolt and two (2) washers. Be sure to follow the same sequence as the master cylinder and calipers.

Step 9:

Locate the Galfer **rear line E**; this line will replace the OEM hose traveling from the ABS hard tubing at the swing arm to your rear caliper **(refer to drawing.)SEE FIGURE 5** Install the female end to the hard tubing using an “olive” inverter.

Use the Galfer provided sheath clamp assembly to replace the OEM line holder at this junction **(refer to drawing.)** Route the line down to the rear caliper and use a Galfer c-clip to replace the last OEM line holder at the swing arm **(refer to drawing.)** Install the line at the rear caliper using a single banjo bolt and two (2) washers, be sure to follow the same sequence as the master cylinder and calipers. Locate the Galfer line labeled **LINE D**. This line will bolt onto the master cylinder and route to the **SEE FIGURE 6**

Step 10:

The last step to installing the Galfer brake lines will be the 5 lines that lie under the seat area. They are as follows; **LINE F, LINE G, LINE H, LINE I, AND LINE J**. These will install under the seat. They are all the same length except for one line. **SEE FIGURE 7**

Step 11:

Before you begin the next step, please check the clearance of your new lines. When the front and rear end are fully extended or compressed, make sure the lines do not bind with anything. Be sure to triple check that the lines are traveling correctly and are clear from any obstructions.

Step 11:

Bleed your brake system according to the owner's manual. Add Galfer DOT-4 brake fluid to the system and build appropriate pressure.

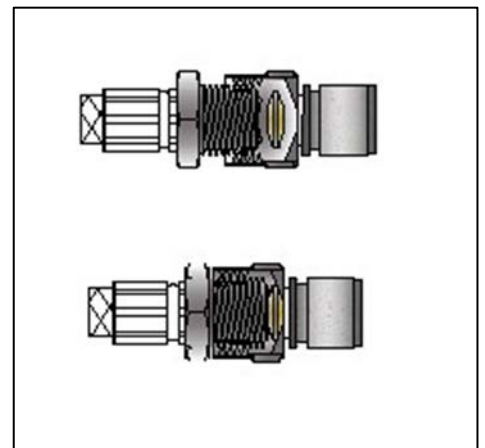
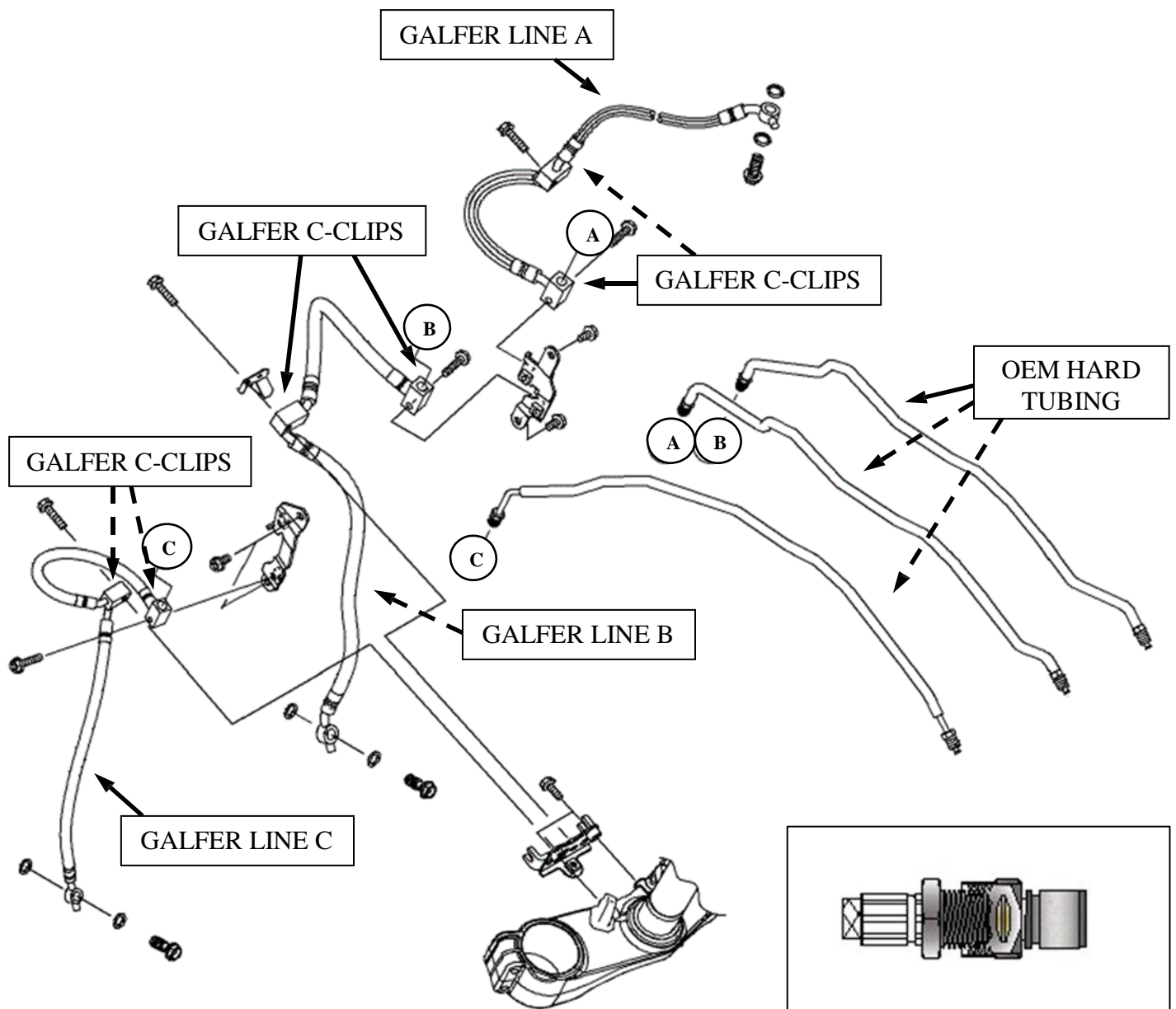
Step 12:

Once you have bled the system, please check the brake fluid level in your master cylinder. Top off your brake fluid according to your manual and close the brake fluid reservoir. To ensure there are no leaks or other issues, zip-tie the brake lever to the throttle for at least 2 hours, for the rear line; use a jug or something similar to apply pressure to your brake pedal. If the lines are not leaking and all else looks good, (bolts are tight and torqued down to specification, washers are in place, and lines are clear from obstruction) you are now ready to ride with the new brake system.

Please be aware that the overall braking feel has been changed dramatically. We suggest taking it easy while you get used to the new brake lever pressure and feel. We recommend checking your brake system periodically; be sure to check that your bolts are tight and **VERY** carefully check your lines for any leaks or damage. If there are any signs of damage or stress to the lines, the complete brake line kit will need to be replaced. Remember, our brake lines have a **LIFETIME WARRANTY!** If you have any problems or questions, do not hesitate to call our tech department - **(800) 685-6633**.

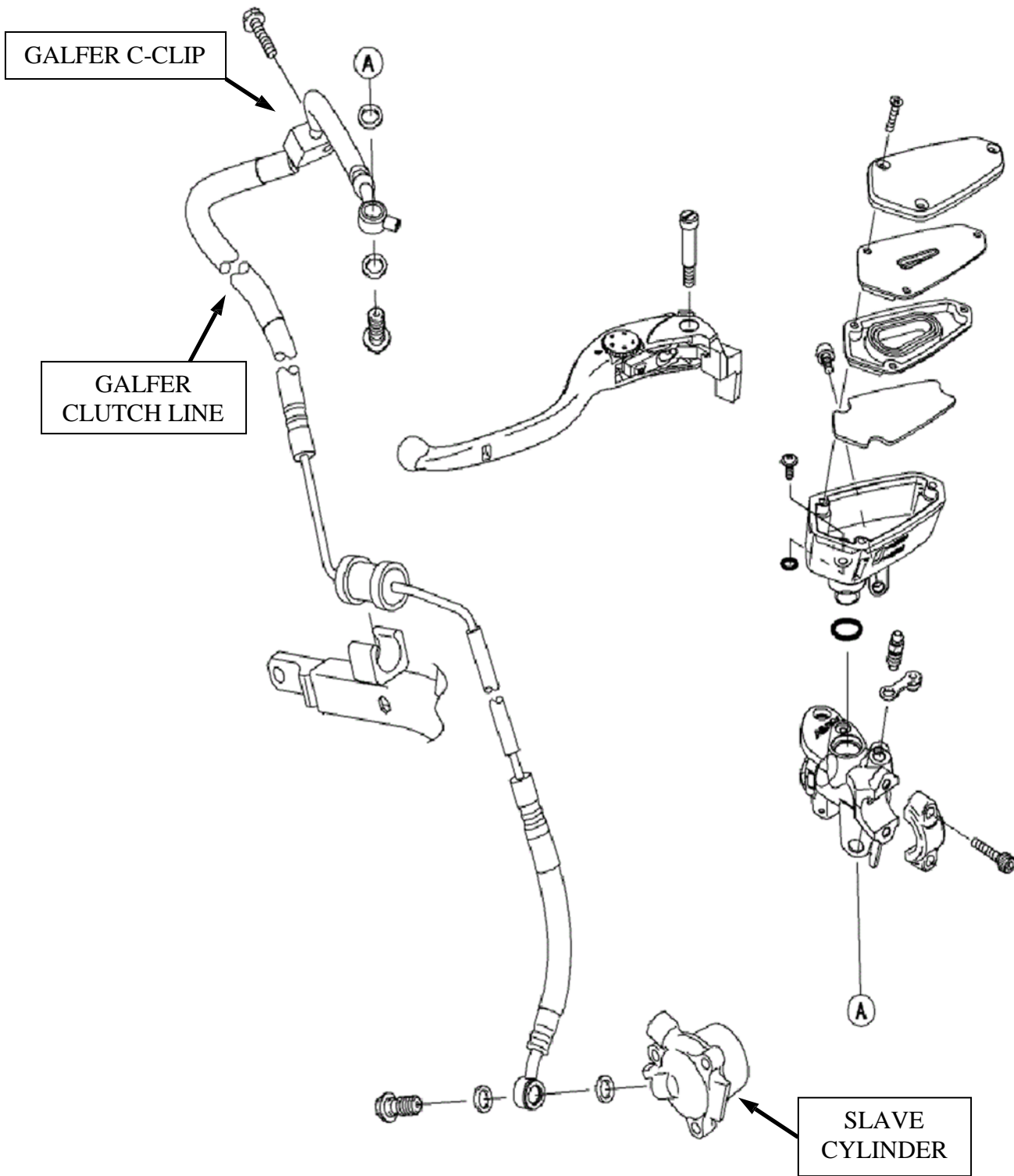


GALFER USA
310 IRVING DRIVE
OXNARD, CA 93030
PH (805) 988-2900 . FAX (800) 685-6633
WWW.GALFERUSA.COM

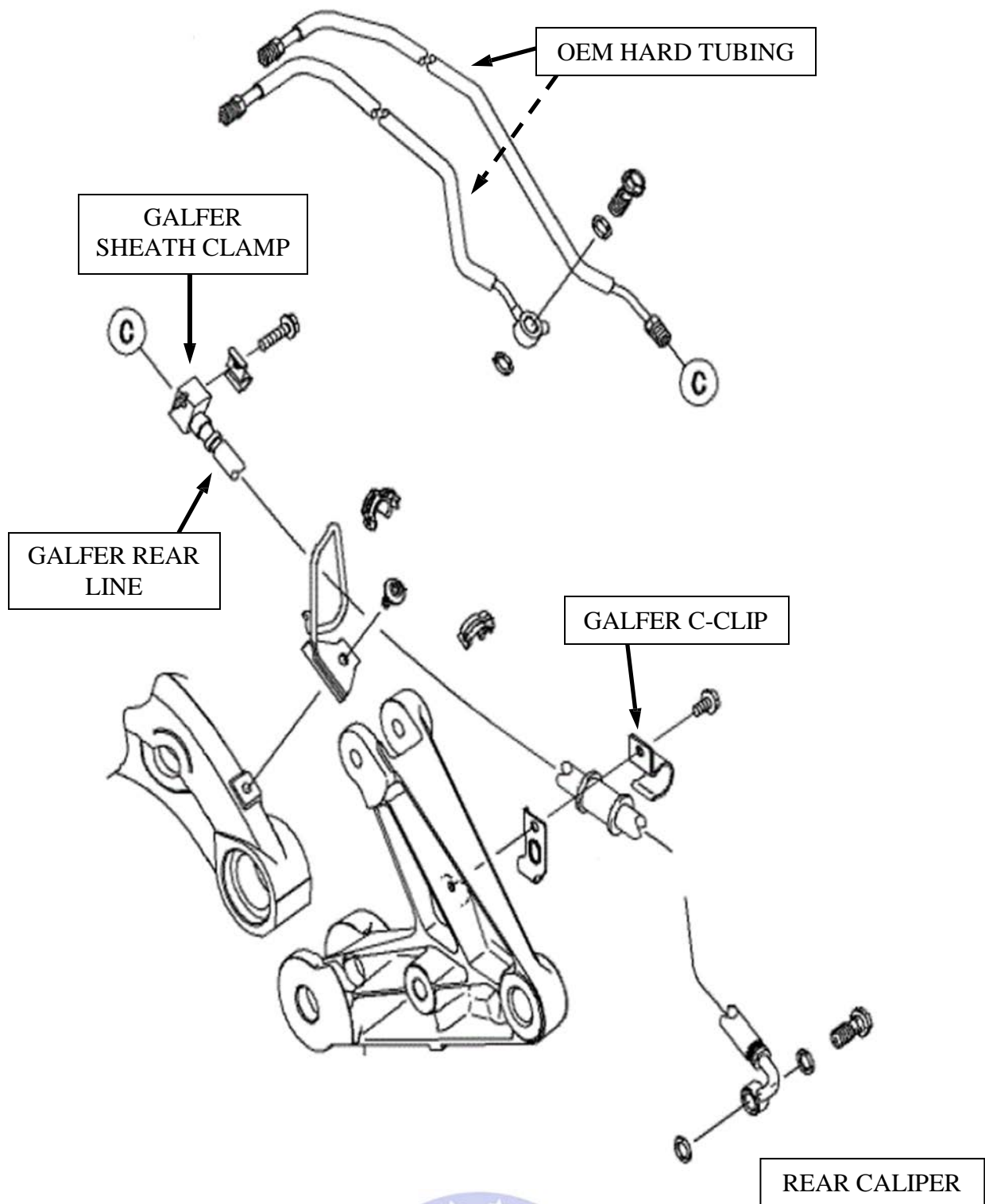


All female ends will need a conic inverter as shown.

GALFER USA
 310 IRVING DRIVE
 OXNARD, CA 93030
 PH (805) 988-2900 . FAX (800) 685-6633
 WWW.GALFERUSA.COM



GALFER USA
310 IRVING DRIVE
OXNARD, CA 93030
PH (805) 988-2900 . FAX (800) 685-6633
WWW.GALFERUSA.COM



GALFER USA
310 IRVING DRIVE
OXNARD, CA 93030
PH (805) 988-2900 . FAX (800) 685-6633
WWW.GALFERUSA.COM

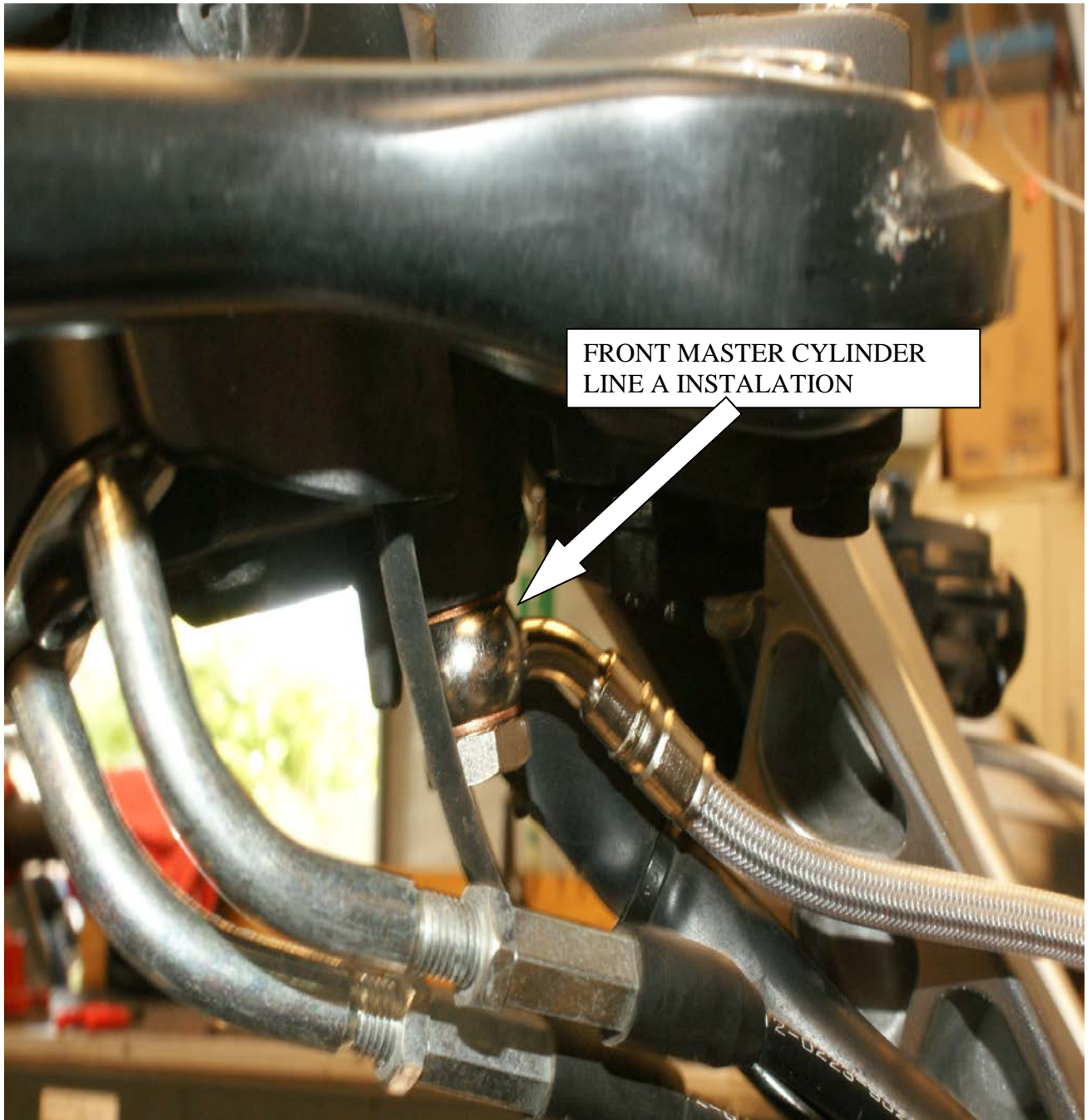


FIGURE 1



GALFER CLIP
INSTALLED ONTO LINE
A

FIGURE 1 CONTINUED

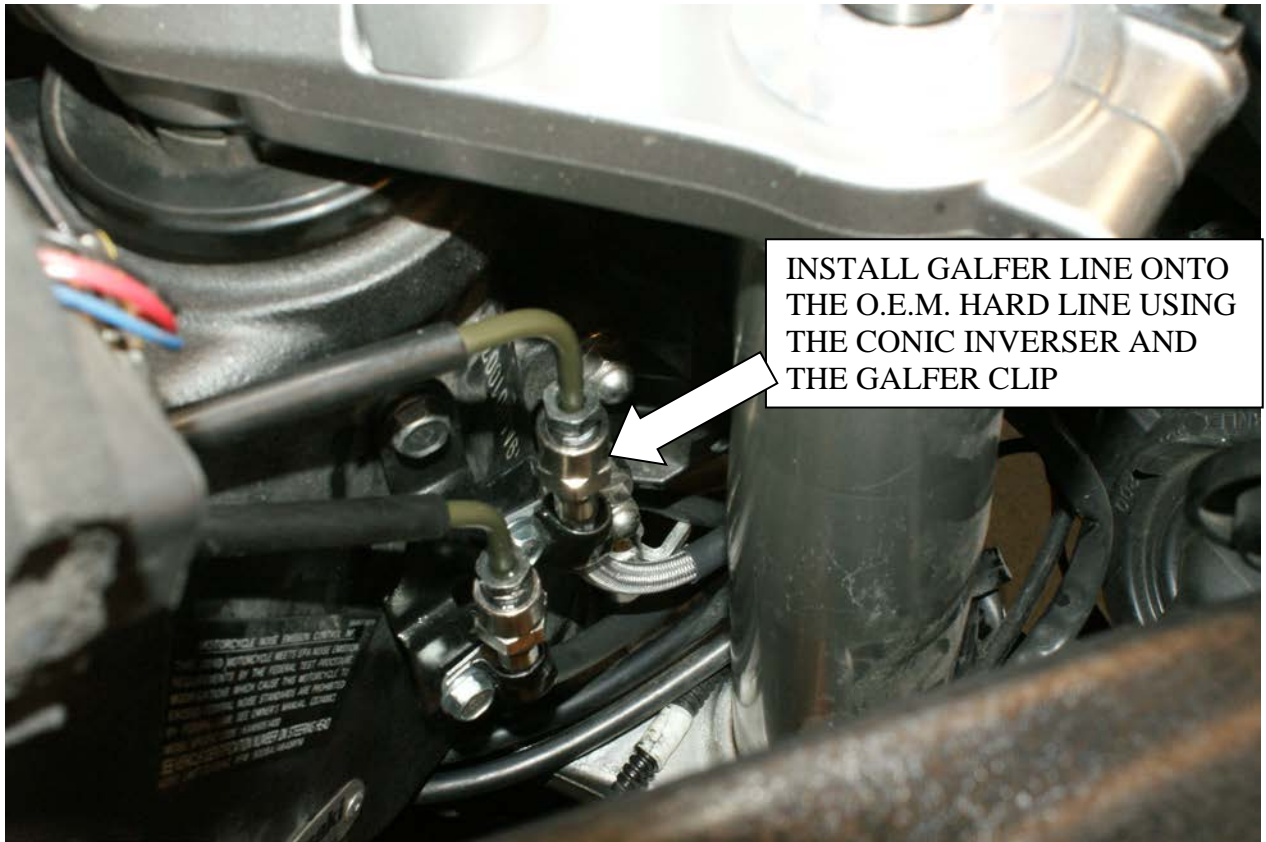


FIGURE 1 CONTINUED

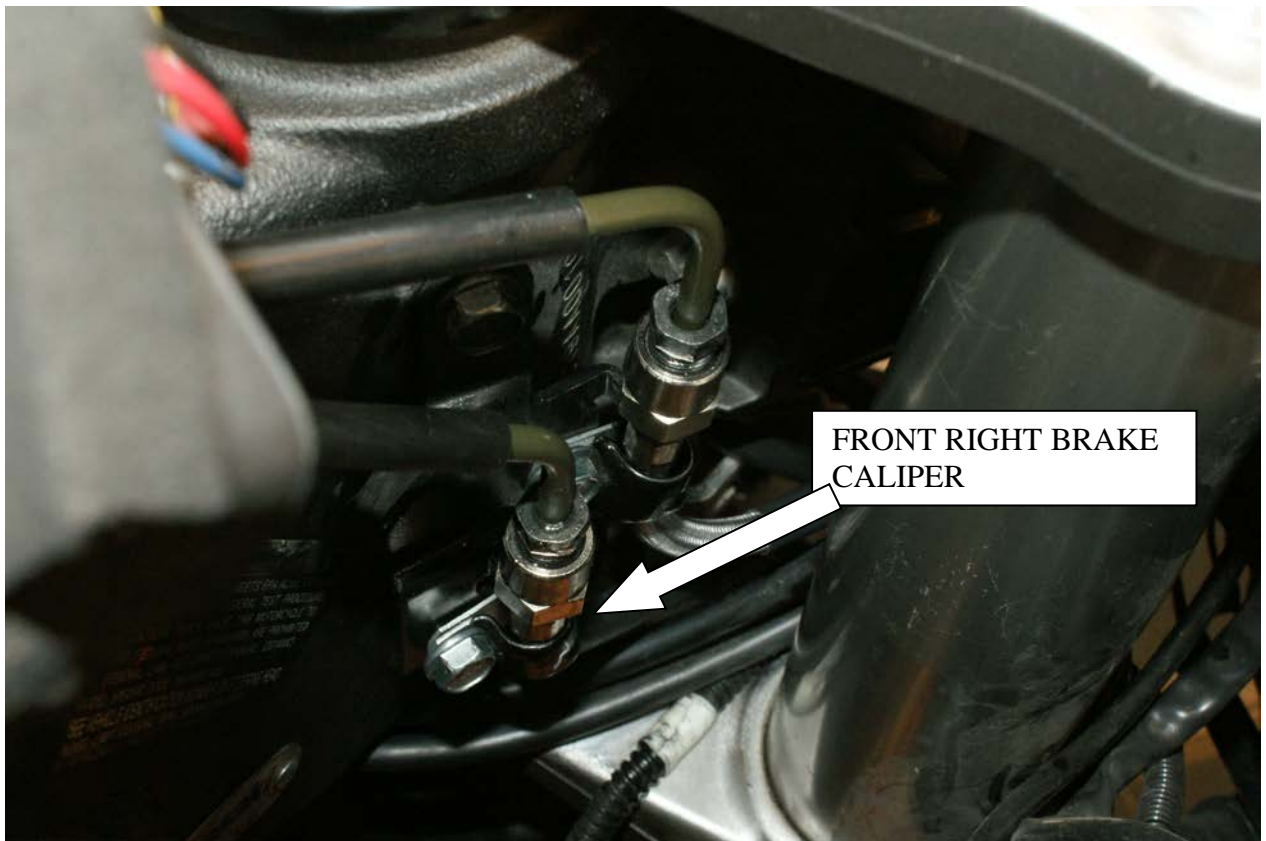
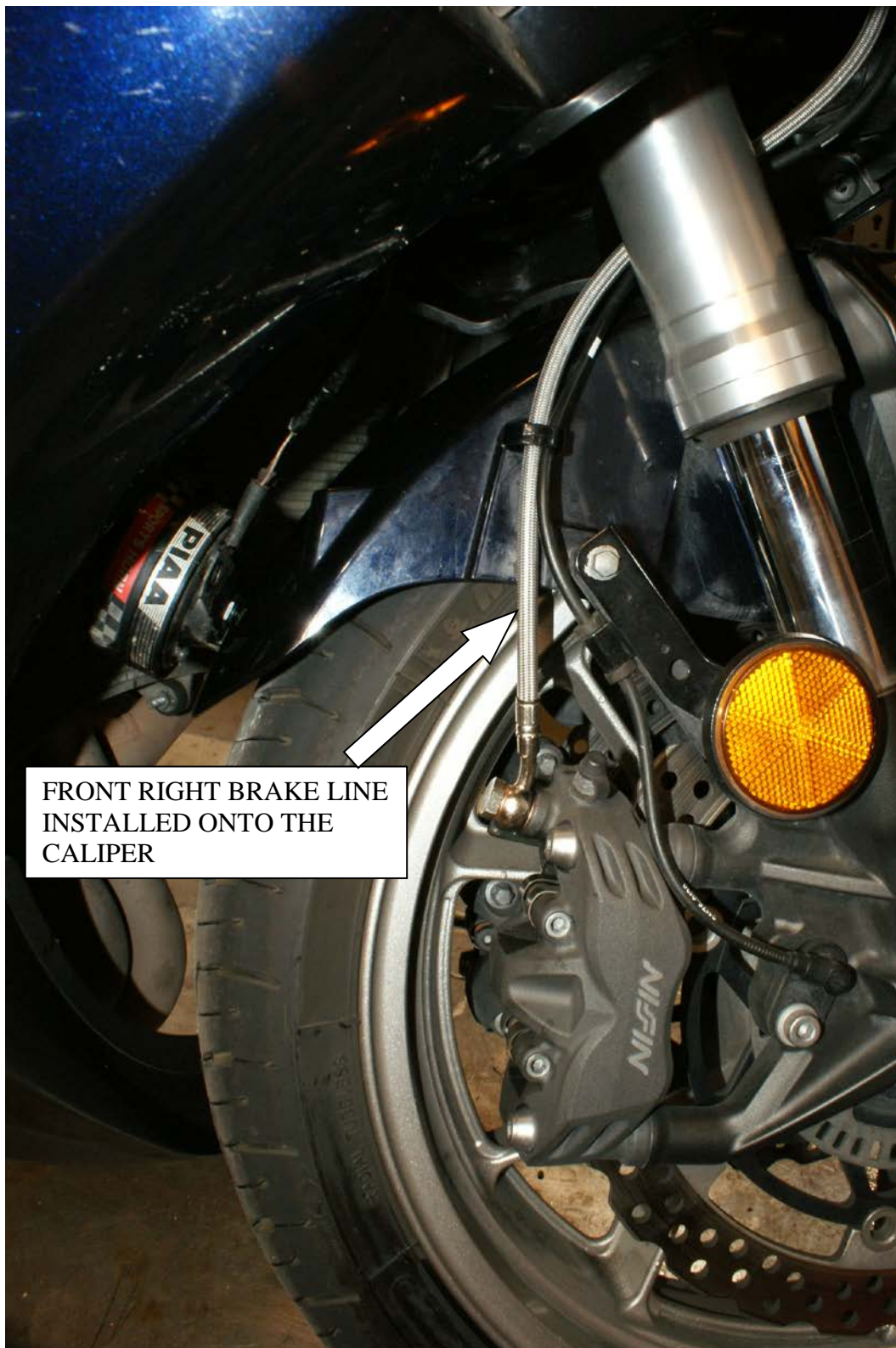


FIGURE 2



FRONT RIGHT BRAKE LINE
INSTALLED ONTO THE
CALIPER

FIGURE 2 CONTINUED

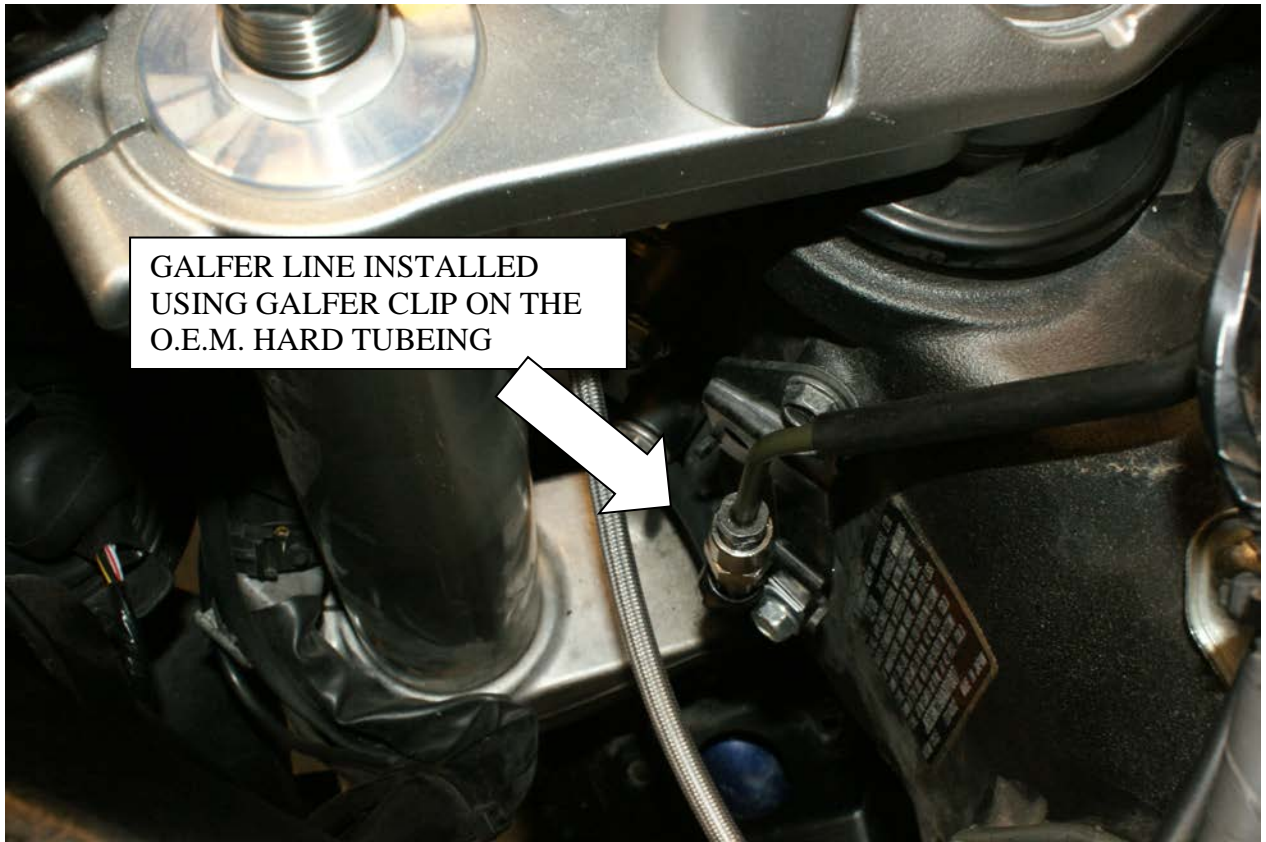


FIGURE 3



FIGURE 3 CONTINUED



FIGURE 3 CONTINUED

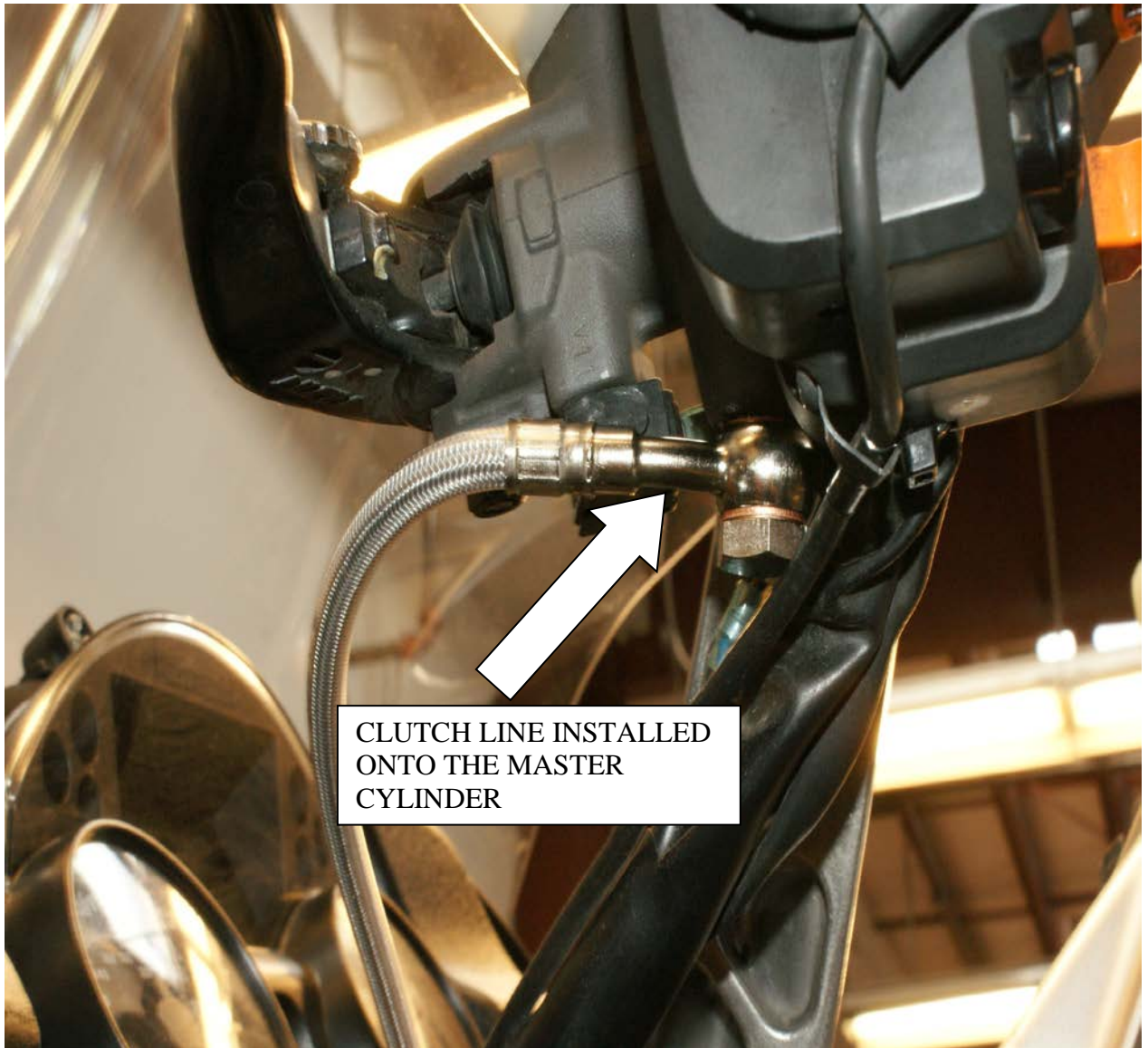


FIGURE 4

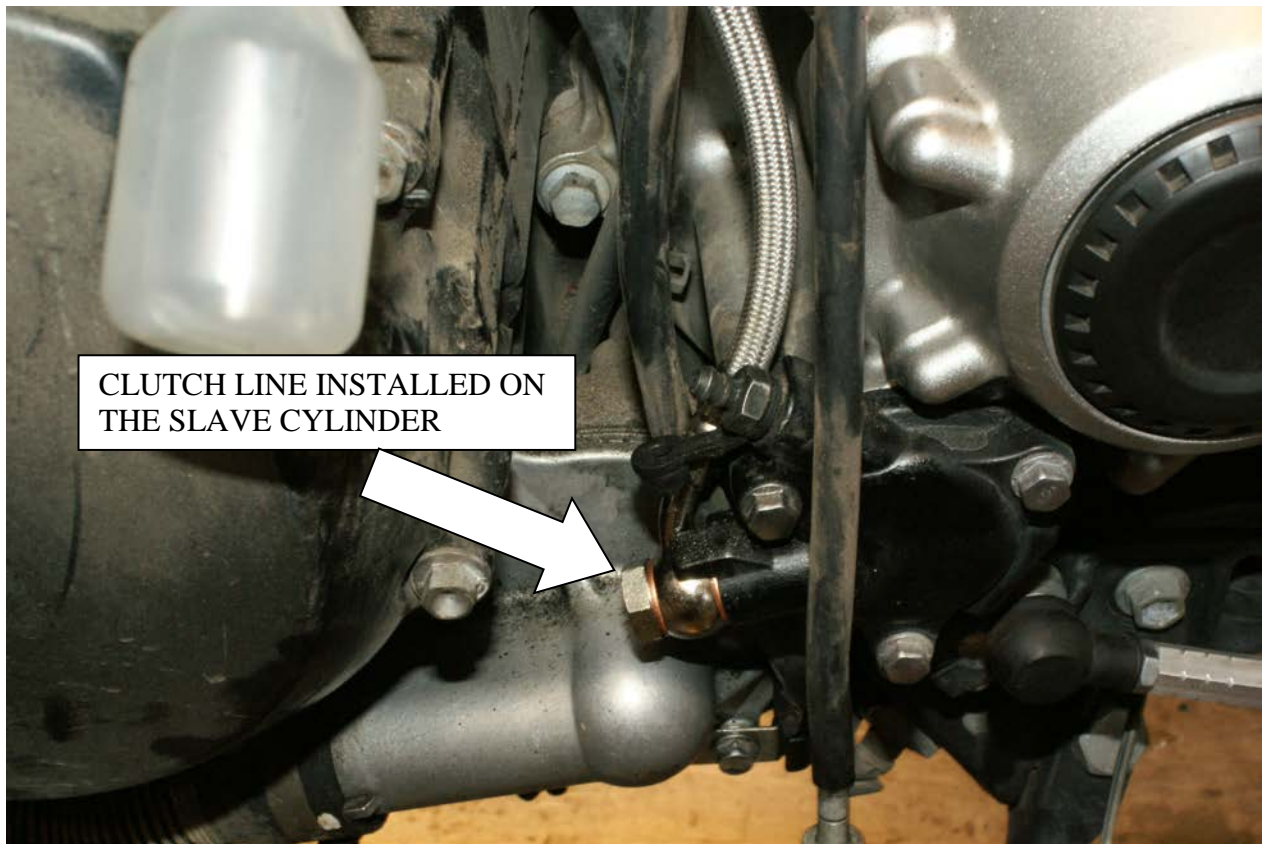


FIGURE 4 CONTINUED

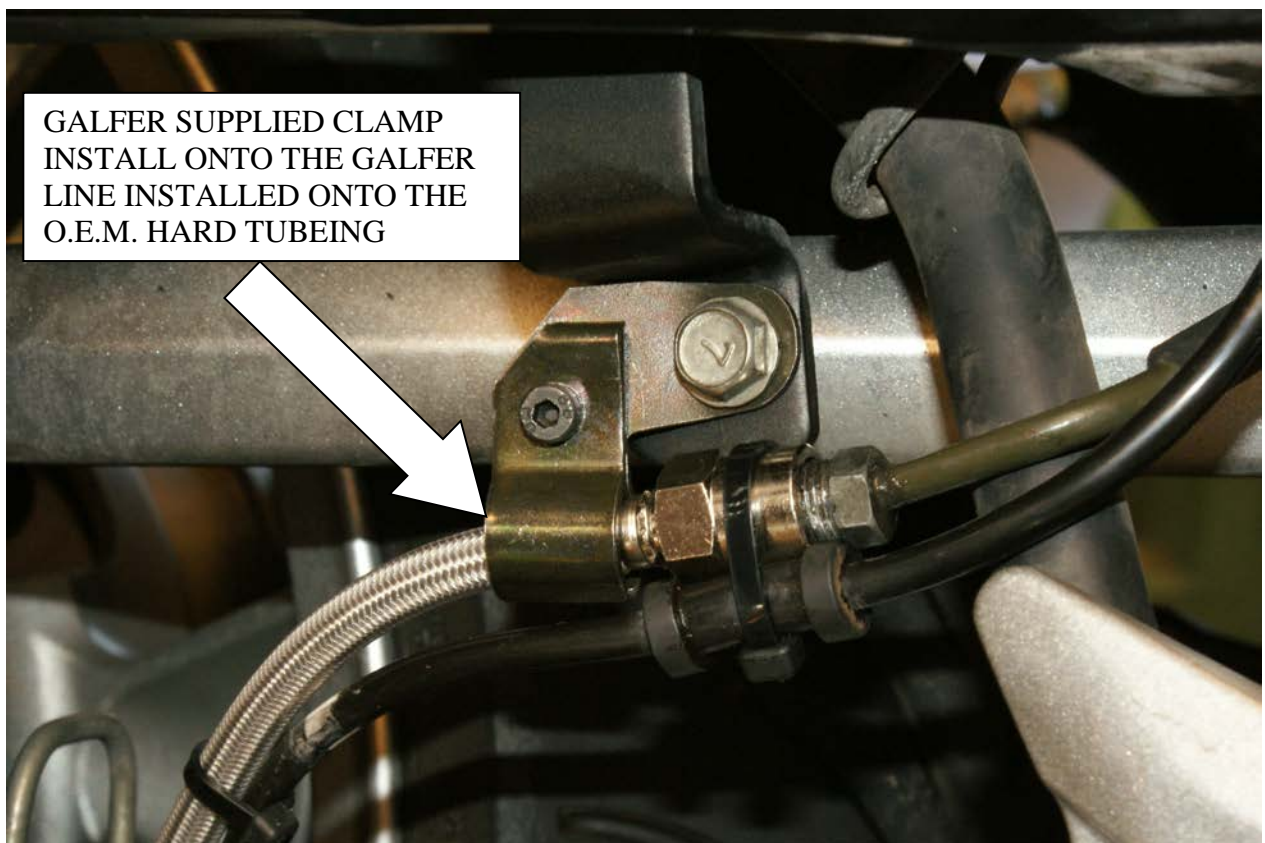
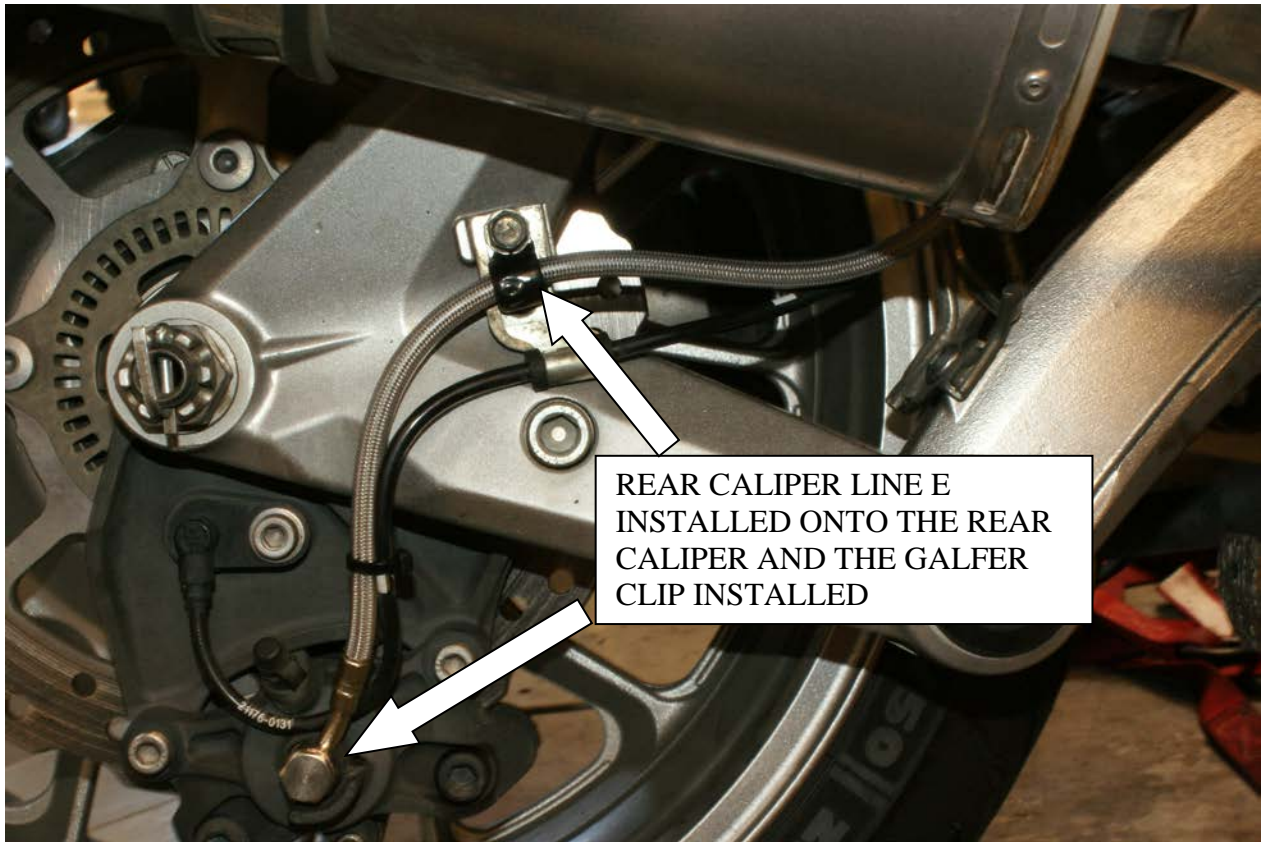
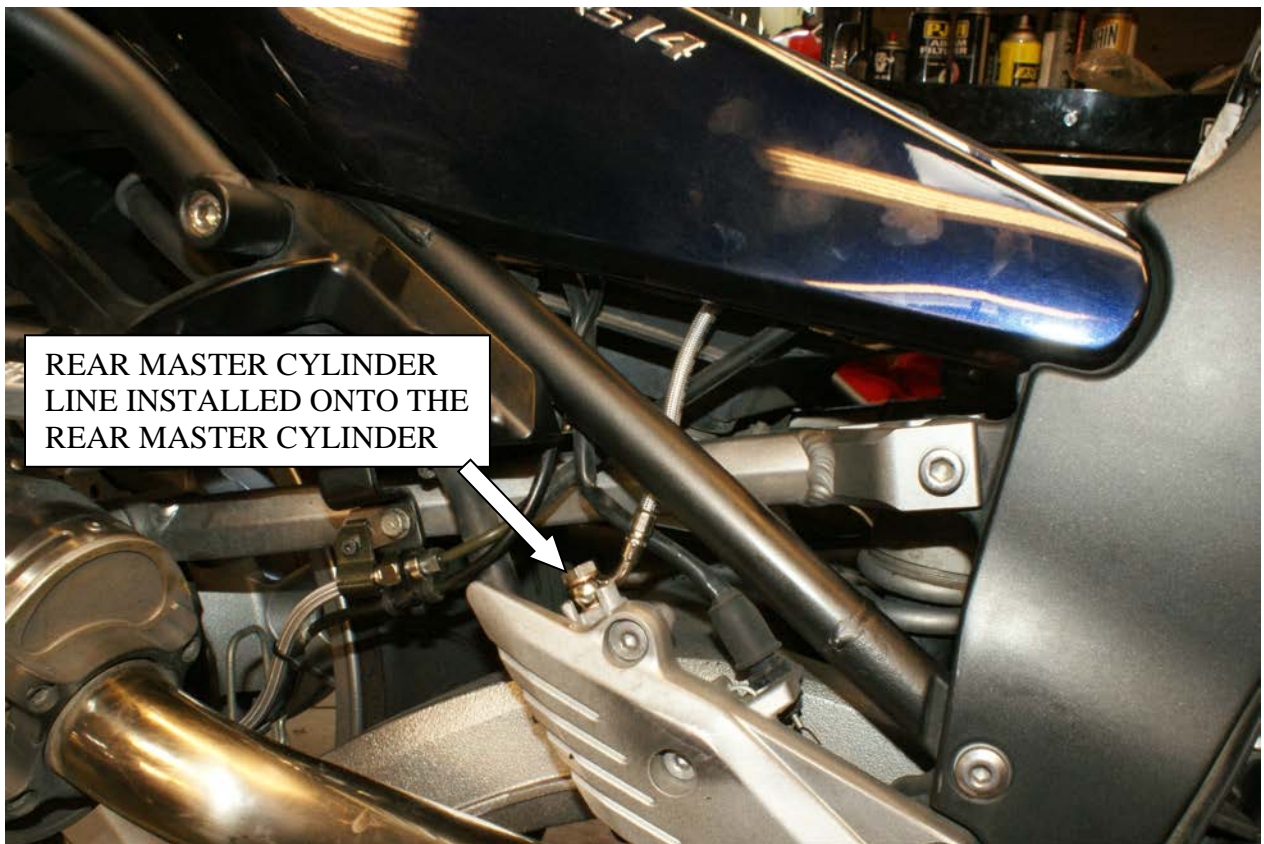


FIGURE 5



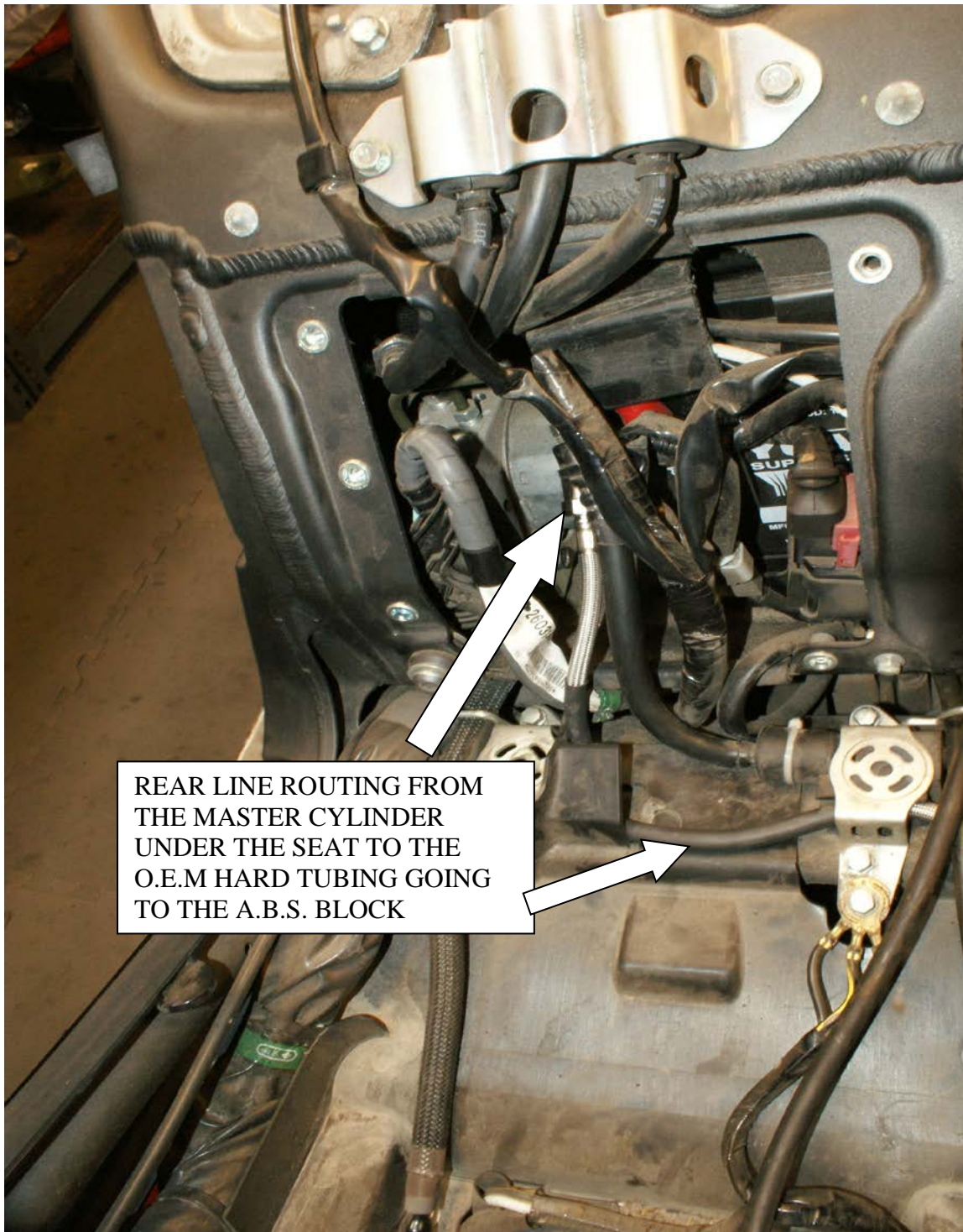
REAR CALIPER LINE E
INSTALLED ONTO THE REAR
CALIPER AND THE GALFER
CLIP INSTALLED

FIGURE 5 CONTINUED



REAR MASTER CYLINDER
LINE INSTALLED ONTO THE
REAR MASTER CYLINDER

FIGURE 6



REAR LINE ROUTING FROM
THE MASTER CYLINDER
UNDER THE SEAT TO THE
O.E.M HARD TUBING GOING
TO THE A.B.S. BLOCK

FIGURE 6 CONTINUED

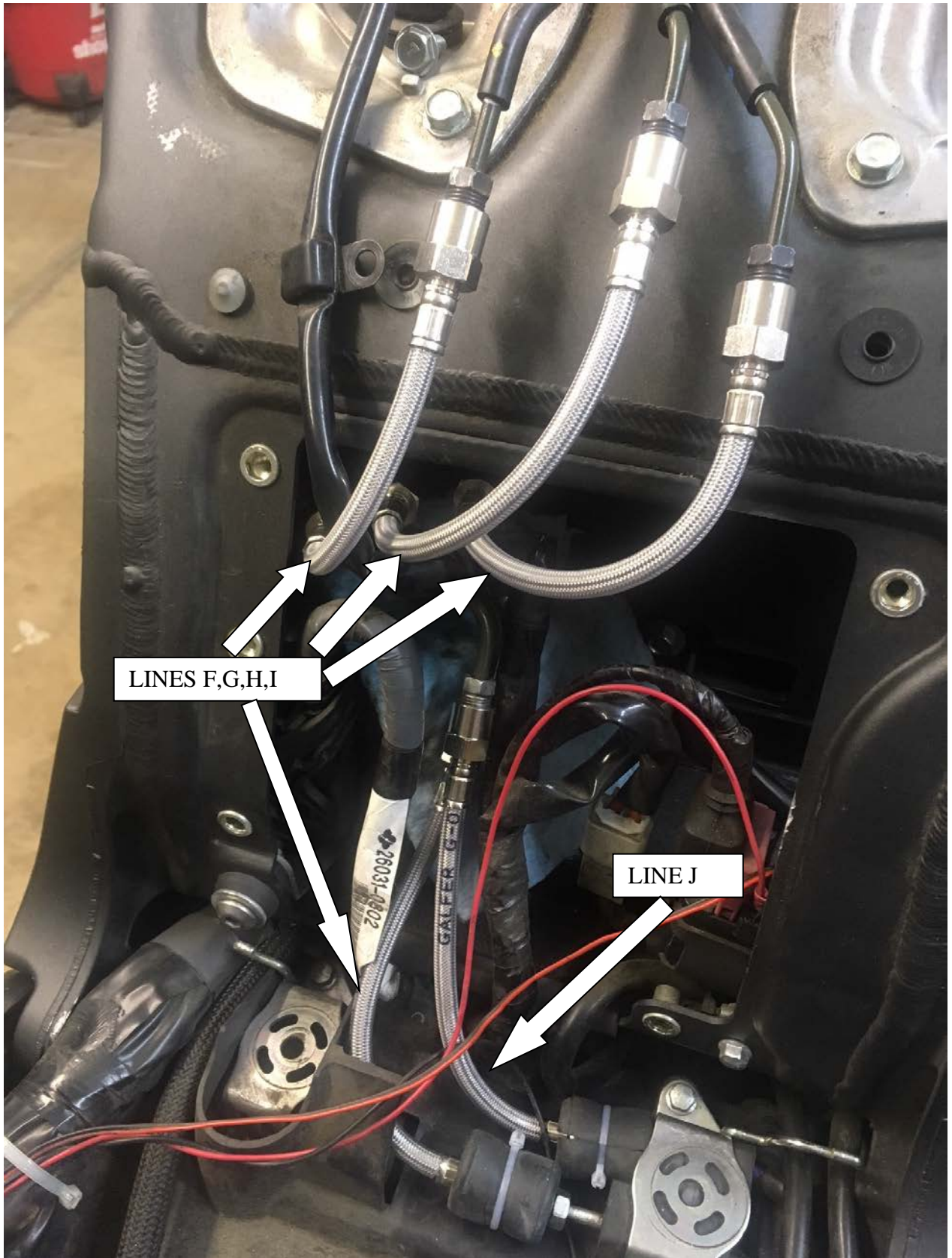


FIGURE 7